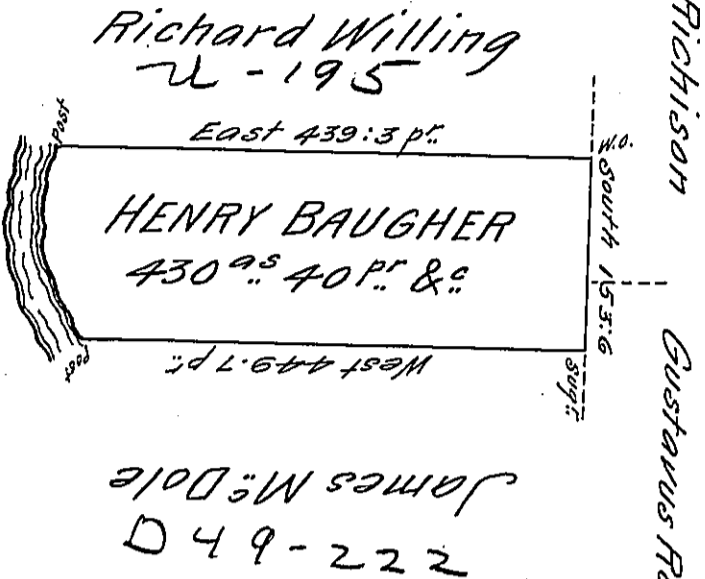


River Courses

- N 37 W 19.2
- N 15 W 25.2
- N 3° E 42.-
- N 2 W 29.-
- N 32½° E 50.8
- Acres 166.2



Situate on the East Side of French Creek in Allegheny County Containing 430 ac. 40 p. and allowance of six p. Cent for Roads & c. Surveyed the 12th day of November 1794 In pursuance of his Improvement Bearing Date the 10 day of April - 1793..

Wm Power D. Sr.

*To Daniel Brodhead Esq. }
Surveyor General }*

IN TESTIMONY that the above is a copy of the original remaining on file in the Department of Internal Affairs of Pennsylvania, made conformably to an Act of Assembly approved the 16th day of February, 1833, I have hereunto set my Hand and caused the Seal of said Department to be affixed at Harrisburg, this twenty-sixth day of April 1906

Loac J. Brown
Secretary of Internal Affairs.